



ST700

Stationary Inspection LED UV-A Lamp



Speed up the inspection process

- Inspect more of the part at once thanks to the ultra-wide, 20 x 26 in / 50 x 66 cm beam when mounted at a working distance of 36 in / 90 cm
- Eliminate additional steps and equipment involved with using a secondary hand-held inspection lamp



Minimize risk of missing indications

- Make indications stand out bright and clear thanks to the high-intensity LEDs – 7,000 $\mu\text{W}/\text{cm}^2$ at 15 in / 38 cm
- Mount the light out of the way, up to 46 in / 117 cm above the inspection surface while still maintaining inspection level intensity



Maximize range of inspections

- ASTM and RRES certified lamp for use in virtually any fluorescent NDT inspection
- Custom UV-A filters eliminate glare to increase contrast
- Multiple mounting and angling options to adapt to your inspection environment

Specification Conformance

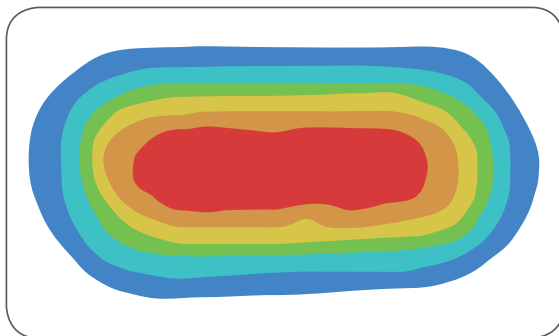
- Airbus AITM6-1001
- ASTM E2297
- ASTM E3022
- ISO 3059
- Rolls Royce RRES 90061

For more information on how the ST700 stationary inspection UV lamp can help speed up your inspection process, visit magnaflux.com/ST700 or contact Magnaflux customer service at cs@magnaflux.com or +1 847-657-5300.

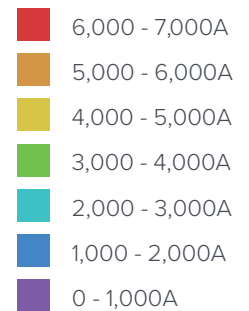
Beam Profile

	Beam Dimensions	Max UV-A Intensity
UV-A Beam Profile at 15 in / 38 cm	13 x 25 in / 32 x 64 cm oval	7,000 $\mu\text{W}/\text{cm}^2$
Working Distance UV-A Beam Profile at 36 in / 90 cm	20 x 26 in / 50 x 66 cm oval	3,000 $\mu\text{W}/\text{cm}^2$
Max Inspection Area UV-A Beam Profile at 46 in / 117 cm	22 x 25 in / 55 x 64 cm oval	> 1,000 $\mu\text{W}/\text{cm}^2$

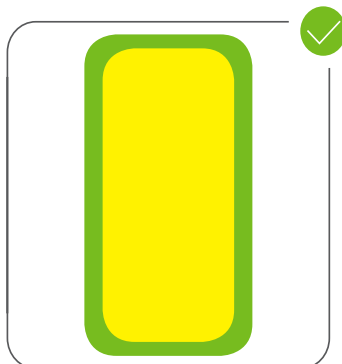
ST700 Top View Beam Profile



ST700 3D Beam Profile

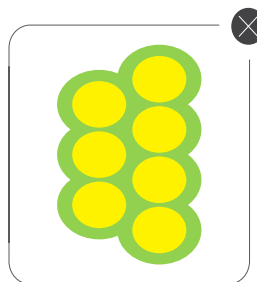


ST700

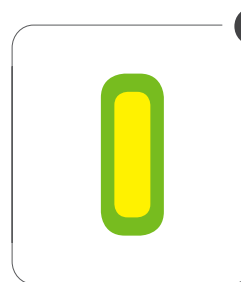


Ultra-wide beam

Competitors



Hot spots



Smaller beam

